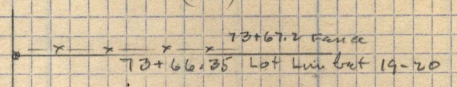
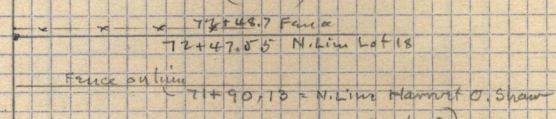


30  
306 - James H. Stephens & Laura M. Stephens to J. Harriet O. Shaw. May 2-1896 -  
Pl. Lot 15 - B. 4 - S. 0.5 - Beg. 22. Pt. N. of S.W. cor. Lot 15 - N. 36 1/2 ft - E. 330.  
S. 58 1/2 ft - W. 190. N. 22 1/2 ft - W. 140. Pt. (140) S. to Cor. Subject to a  
Right of W. granted to Arthur H. Rennie by Reg. 22. Pt. N. of S.W. cor. of Lot  
thence N. S. ft. E. 140. ft - S. ft. W. 140. ft to Cor.

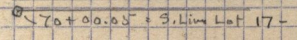
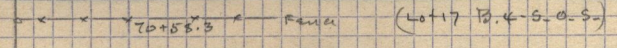
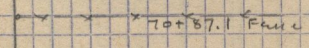
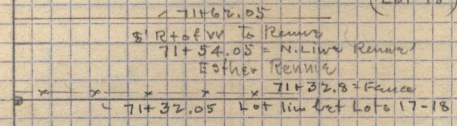
(20)



(Lot 19)



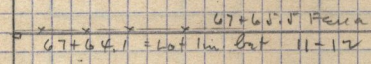
(Lot 18)



69+53.85 City Mount of 30th Str

69+21.35 = S. Lin Str.

(Lot 17)



(12)

Sketch of Stephens Sq.

